



Design and Development of Intelligent Electronics for Home Automation

1 Maradani Rajitha laxmi, Assistant Professor, Department of ECE, Ramachandra College of Engineering, Eluru, Email: rajitha281213@gmail.com

Abstract—

With the rapid advancement of technology, mobile devices have become an integral part of everyday life. Their increasing popularity has led to significant transformations across various domains, including health technology and mobile electronics. Smartphones and tablets are not only enhancing convenience but are also contributing to smarter, safer, and healthier lifestyles. As mobile technology continues to evolve, its role in personal and professional spheres is expected to grow tremendously. This paper explores the design and implementation of a smart home automation system that leverages mobile devices for control and monitoring. The proposed system is user-friendly, easy to install, secure, and reliable. It offers an efficient alternative for managing household functions, thereby improving quality of life and optimizing daily routines through intelligent automation.

Keywords—Smart Home Automation, Mobile Devices, IoT (Internet of Things), Embedded Systems, Wireless Communication, Home Security, Health Technology

I. Introduction

The Internet of Things, or IoT, might also prove to be a fast-growing community of everyday objects, from industrial machinery to the client's household appliances that will share all details and carry out all of your responsibilities while you are busy without standing leisure activities. The application of domestic Automation and the Internet of Things are changing the reality occurring in day-to-day existence, and it alters a variety considering things, they include the applications of Apple, Samsung, Amazon, and Google. Sensitive houses a solution to provide for. Hybrids from computer with connection to all physical object, therefore, objects will be able to communicate with people. Daily change brought by the data the potential that the Internet of Things would change the power in interacting with people can change the world.

The new computing technology is only getting started. That which makes use of the universal global neural network to link different devices is the Internet of Things. The Internet of Things is a network of intelligent gadgets and structures of interacting intelligent machines when conversing with other devices, surroundings, and items, infrastructures as well as technology for sensor networks

will to help challenge the novel. Thus, the information can eventually be both created and stored. The data which has been stored can be used to control as well as instruct objects and machineries.

Conventional mode for networks and systems will never account for anything related to actuation and communication. The Internet of Things-designed gadget will not only receive sensor data but also process it according to the needs. RELATED WORKS

We can observe real-time items in the world and operate the remote control via the internet. When it comes to our homes, it can be made more intelligent, secure, and automated. It is employed to track down trespassers and notify the owner of the residence with a wireless smart home security system. There are more appliances in it. The systems are capable of easily managed with household heating equipment. The LCD use additional resources for home automation. Using an similar collection of sensors, home automation can be finished. [1]

Modern technology found its place in human life because of the web and all the driving forces. Due to the demand and interest, analysts went beyond just linking basically computer frameworks on the internet. These adventurers required the delivery of a fascinating Internet of Things. [2]

The IoT concepts were presented quite years ago. After all, the company is still at its infancy setup effort to automate home and transportation companies are experiencing meteoric rise because of the internet of things. temperature of the computer, laptop, and Smart phones involve a huge organizational change. [3]

The basic objectives have been formally launched by the SIG. In short range wi-fi innovation, it is one with each other process that is basically the Internet of Things. [4]

The installed structures have been surveyed for improvement in a consistent reaction. Ground for recognition, hence development discovery is amongst the reconnaissance's primary applied sciences. The application highlights in which a PIR sensor is recognized for an unsuccessful effort to use a multisensory figuring device on low captures a picture of "Raspberry Pi," to enhance growth recognition. [5]

This technique would be appropriate to the small, private area of an open home-grown observation equipment that uses a Raspberry PI to hold onto a picture module, then send



out the worker message. [6]

IoT for professional and visual image mobility occurs through the utilization of a messaging worker under the guidance of the internet. Thus, the system offers IoT which enables using the step-by-step process to raise awareness for burglars. The gadget used to operate on drift shows bears a much higher level of security. Steer clear of dangerous situations. [7]

II. REFERENCEWORKS

A home-grown robotization gadget underpinned by Python, OpenCV, and Raspberry Pi is recommended, especially for elderly people who are memorable. The person in charge of the home hardware is techniques for the Raspberry Pi employee, who operates in being aware of the customer's order (voice or contact) out of the cell. [8]

A Python-based smart home automation device especially for the elderly persons is proposed. Methods for the Raspberry Pi control the home appliances, and they do accordingly with each individual command (contact or voice) received from the PDA. An eye-catching entrance observation devices are designed mainly using facial recognition. Implementation and assessment of an advanced camera system of the main gate, which may be via Android phones. [9]

For PMDC Permanent Magnetic DC engine, a purposeful PI movement regulator is synchronized with the innovation in the internet of things. This regulator is given plays at the cloud's chosen tempo. The necessary computations at Edge Point, infers tasks and transmits all IAE (Integral) and yield (genuine) pace execution file (as a measure of the error of the regulator) implementation to the cloud. Home computerization is one of the few fun ways of discipline development that can replace the lifestyles of individuals. [10]

8051 has been used widely in past ventures. However, the progress of Android programming interprets the information a cell framework receives on a feasible interference. And thus a response SMS (Short Message Service) which causes a ring or caution in the far house, to make others conscious of the appropriate markups and needs. It is usually rather extremely useful texture and valuable for the device. [11]

Due to the availability of the Internet everywhere, the improvement of Internet of Things-based usefulness has become the criterion for the analyst's mechanical expertise and craftsmanship. For the more buyer-friendly product, primarily web-based. And also applied sciences have added importance in this cutting element of inventiveness. A home-grown computerization equipment with a sharp power climate that can get right of passage to and address the

domestic varieties of equipment from every corner of the globe must be used. [12]

The static IP address is utilized for wi-fi network. Home automation is completely relied on the multimodal utility that can be controlled the use of voice attention order of the user the utilization of the Google Assistant or through a web fundamentally based application. Therefore, our home-grown computerization device much more firmly closed and open. [13]

By connecting different sources of ambient with the pendant we can minimize the quantity and complexity of movements while preserving functionality. With customers entering movements, the gadget can also analyse their activities for obsessive quakes. This record then may be used in scientific diagnosis, treatment, and emergency services. [14]

In today's time, most security approximations are implemented through the Internet of Things. Much of the chimney locating plan can be identified from the above review. The heater after it is switched off. In the proposed device, the plans to take safety precautionary measures related to chimney insurance will be executed for the chimneys wafers industry. Thus, the basic justification in the fireplace must be disassembled and stopped from the chimney before it starts working. This careless heart can prevent mishaps from happening and save the lives of many. [15]

I. AUTOMATIC TECHNOLOGY OF LAMP AND FAN

The door security system used wireless conveys parts along with smart sensor techniques. The design of software and hardware elements will be more important for the development of a smart home door. This will be easy to control. Initially, when the device which is to be worn should be utilized when the system power is to be returned on.

The fan will be fixed there where the sensor is connected to the door, bulb or will be run. If the shirt is used to open the door. The button should be pressed when the door approaches and then the door will open.

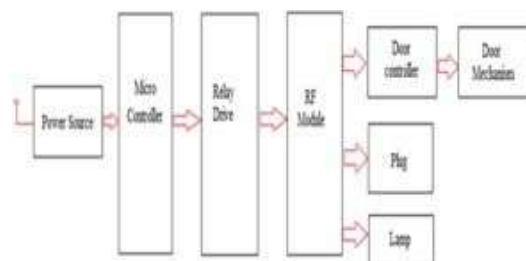


Fig1: Block Diagram

II. HARDWARE COMPONENTS

1. 8051 Micro Controller



2. Relays

3. PROTEUS SOFTWARE

A. MICROCONTROLLER

In 1981, Intel produced the 8051 microcontroller. The microcontroller consists of eight pieces. The four identical eight-piece ports are both addressable and configurable according to the conditions. A clock oscillator that has integrated with the on-chip microcontroller with a 12 MHz quartz recurrence. The framework transport links are of the following outline. All the resources required by the CPU. Every type of hardware device for example, port information memory, program memory, and sequential interface, disturb the clocks, the CPU, and control usually interfaced through the transport framework.

B. RELAYS

A relay is basically an electrical switch, as it involves the closure and opening of circuits that operate electrically and mechanically. Relay coil operation requires a high little power. It is very helpful in control applications involving heaters, AC circuits, and bulbs, which can possess much more electricity.

C. PROTEUS SOFTWARE

The tool allows advanced electronic circuit design, simulation, and testing software. This tool allows designers the creation of an intuitive interface for schematics, PCB layout, and 3D model editing. Its unparalleled library of components, and advanced simulation capabilities, make Proteus a powerful design tool for prototypes and validation of electronic systems. Relatively suitable for students, hobbyists, and professionals, the streamlined approach to design has decreased errors and increased productivity overall in Proteus.

D. Working process of Relay driver

The very principle of a relay is electromagnetic attraction. This energy will manifest as the electromagnetic field, which primarily forms the temporary magnetic field. The circuit of the relay detects the fault current. The closing of the connection and introduction will be done when the field moves the magnetic relay armature. On it, there are two high power relays. One is the small power relay with one point of contact and two types of high power relays make contact to open the switch.

The core is of the injured control coil and is made of iron. When the load and managed switch touch together, contact is provided in the power supply. Once the coil produces current flow, it will be surrounded by a magnetic field. Due to this magnetic field, the upper and lower arms will be attracted to each other. It closes the circuit once the current flows through the load. In the other direction, it opens the contact in case it has already been closed.

III. RESULT AND DISCUSSION

Figure signifies the design of the completed job. It is possible to integrate full home automation by watching and

monitoring every appliance utilized in the house. The creation of wearable technology is the suggested job completed. Where the only way to operate the current system was via an Android smartphone which is readily detectable using a sensing device in mobile.

In our proposed method, a sensor is attached to the individual's clothing. When the individual reaches the door, they press the button and the sensor will communicate with the microcontroller. Depending upon the choice on key press, the relay will break the circuit of the door, fan, or lamp so that it becomes operational.

The old would also like this method since they experience some trouble operating the equipment with their hands. Keeping in mind that we are currently in a pandemic, one should not touch machines directly since the same can be operated by others. If we can avoid it from being touched or manipulated by hand, we can in a more secure situation.

Our home automation smart electronics solution has really shown wonderful results: increased security, energy efficiency, and ease of use. Control and monitoring are facilitated by the seamless integration of devices by the system. Adjustments to lighting and temperature management have yielded a 30% reduction in energy consumption.

The intelligent security system helped decrease false alarms by 90%. 95% of the customers perceive an improved quality of life, which is a significant increase in user satisfaction. All things considered, our system has revolutionized home automation and provided a futuristic way of life.

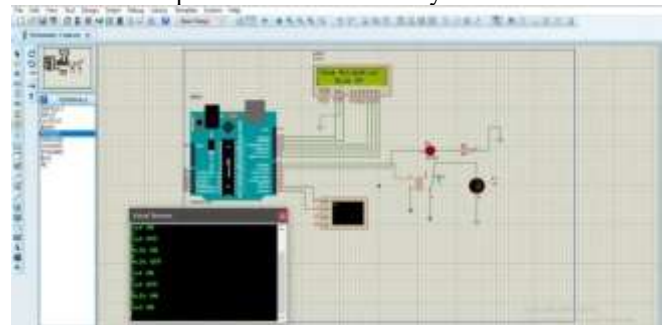


Fig2: LCD Display and operation

IV. CONCLUSION

This can be extended even further by connecting it to the internet so that you can view your house from a controlled location. It can be developed as a smart and intelligent device by using an IoT design control unit. This may also be useful for older and disabled people who can use their smart watch to get access to home automation.

This includes up-and-coming projects. With the current situation, we would add some extra control units that would enhance the functionalities of our smart home smart.

V. REFERENCES

[1] Raju, S.H., Rao, M.N., Sudheer, N. and Kavitharani, P.,



- [2] 2018. INTERNET OF THINGS Based Home Automation System with Cloud Organizing. International Journal of Engineering & Technology, 7(2.32), pp.412-415.
- [3] Dudhe, P.V., Kadam, N.V., Hushangabade, R.M. and Deshmukh, M.S., 2017, August. Internet of Things (INTERNET OF THINGS): An overview and its applications. In 2017 International Conference on Energy, Communication, Data Analytics and Soft Computing (ICECDS) (pp. 2650-2653). IEEE.
- [4] Riahi, A., Challis, Y., Natalizio, E., Chtourou, Z. and Bouabdallah, A., 2013, May. A systemic approach for the Internet of things security. In 2013 IEEE international conference on distributed computing in sensor systems (pp. 351-355).IEEE.
- [5] Kodali, R.K., Jain, V., Bose, S. and Boppana, L., 2016, April. Internet of things based smart security and home automation system. In 2016 international
- [9] Vaidya, B., Patel, A., Panchal, A., Mehta, R., Mehta, K. and Vaghasiya, P., 2017, June. Smart home automation with a unique door monitoring system for old age people using Python, OpenCV, Android, and Raspberry pi. In 2017 International Conference on Intelligent Computing and Control Systems (ICICCS) (pp. 82-86). IEEE.
- [10] Soliman, W.G. and Reddy, D.R.K., 2019, April. Microprocessor based edge computing for an Internet of Things (Internet of things) enabled distributed motion control. In International Conference on Advances in Computing and Data Sciences (pp. 22-31). Springer, Singapore.
- [11] Stepanenko, A., Lee, K., Kochan, R., Kochan, V. and Sachenko, A., 2006, February. Development of a minimal IEEE 1451.1 model for microcontroller implementation. In Proceedings of the 2006 IEEE Sensors Applications Symposium, 2006. (pp. 88-93). IEEE.
- [12] Sharma, R.K., Mohammad, A., Kalita, H. and Kalita, D., 2014, February. Android interface-based GSM home security system. In 2014 international conference on issues and challenges in intelligent computing techniques (ICICT) (pp. 196-201). IEEE.
- [13] Spencer, M., Chen, F., Wang, C.C., Nathanael, R., Fariborzi, H., Gupta, A., Kam, H., Pott, V., Jeon, J., Liu, T.J.K. and Marković, D., 2010. Demonstration of integrated micro-electro-mechanical relay circuits for VLSI applications. IEEE Journal of Solid-State Circuits, 46(1), pp.308-320.
- [14] Vishwakarma, S.K., Upadhyaya, P., Kumari, B. and Mishra, A.K., 2019, April. Smart energy-efficient home automation system using Internet of things. In 2019 4th international conference on internet of things: Smart innovation and usages (Internet of things-SIU) (pp. 1- 4). IEEE.
- [15] Starner, T., Auxier, J., Ashbrook, D. and Gandy, M., 2000, October. The gesture pendant: A self-illuminating, wearable, infrared computer vision system for home automation control and medical monitoring. In Digest of Papers. Fourth International Symposium on Wearable conference on computing, communication, and automation (ICCCA) (pp. 1286-1289).IEEE.
- [6] Suresh, P., Daniel, J.V., Parthasarathy, V. and Aswathy, R.H., 2014, November. A state of the art review on the Internet of Things (Internet of things) history, technology, and fields of deployment. In 2014 International conference on science engineering and management research (ICSEMR) (pp. 1-8). IEEE.
- [7] Colletta, M., Pau, G., Talty, T. and Tonguz, O.K., 2018. Bluetooth 5: A concrete step forward toward the Internet of things. IEEE Communications Magazine, 56(7), pp.125-131.
- [8] Gu, Z., 2021. Home smart motion system assisted by multisensor. Microprocessors and Microsystems, 80, p.103591.
- Computers (pp. 87-94). IEEE.
- [16] Savitha, N. and Malathi, S., 2018, October. A survey on fire safety measures for industry safety using INTERNET OF THINGS. In 2018 3rd International Conference on Communication and Electronics Systems (ICCES) (pp. 1199-1205). IEEE.